



29 Park Drive, DN6 9NS
£185,000 Offers In Region Of
Tenure Freehold

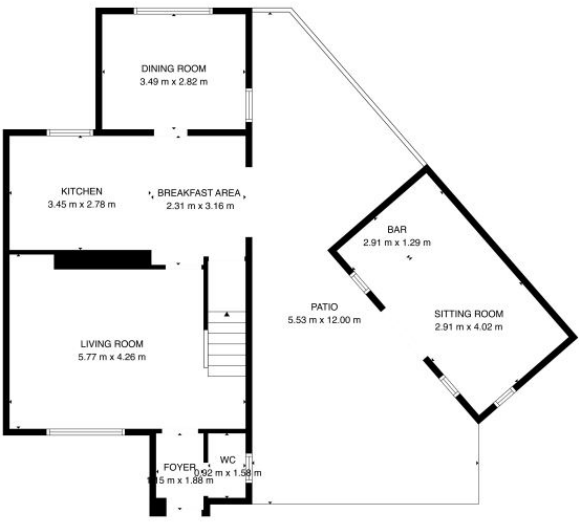
- **EXTENDED KITCHEN DINING**
- **3 BED SEMI DETACHED HOME**
- **VERSATILE OUTBUILDINGS FOR BAR GYM OR OFFICE**
- **CORNER PLOT**
- **MOVE IN READY**
- **NEW KITCHEN AND**

This beautifully presented three-bedroom semi-detached home is move-in ready and ideal for first-time buyers. Set on a generous corner plot, the property is stylishly finished both inside and out, offering modern living with versatile spaces to suit a variety of lifestyles.

The ground floor features a welcoming layout with a spacious separate dining room, perfect for family meals or entertaining guests. The modern kitchen is fitted with an integral oven, hob and double oven, providing everything needed for convenient day-to-day living. Upstairs, there are three well-proportioned bedrooms along with a contemporary family bathroom finished to a high standard.

Outside, the property boasts two external buildings that offer fantastic flexibility and could be used as a home office, a bar or even a private gym. The corner plot provides additional outdoor space and the benefit of off-street parking.

This home is beautifully maintained throughout and combines modern style with practical living. Ready to move straight into, it offers an excellent opportunity for buyers looking for a property that is both attractive and versatile.



TOTAL: 112 m2
GROUND FLOOR: 71 m2, FIRST FLOOR: 41 m2
EXCLUDED AREAS: PATIO: 42 m2, WALLS: 12 m2

Environmental Impact (CO ₂) Rating		
	Current	Potential
Very environmentally friendly - lower CO ₂ emissions		
(92- A		
(81-91) B		
(69-80) C		
(55-68) D		
(39-54) E		
(21-38) F		
(1-20) G		
Not environmentally friendly - higher CO ₂ emissions		
England & Wales	EU Directive 2002/91/EC	

Energy Efficiency Rating		
	Current	Potential
Very energy efficient - lower running costs		
(92- A		
(81-91) B		
(69-80) C		
(55-68) D		
(39-54) E		
(21-38) F		
(1-20) G		
Not energy efficient - higher running costs		
England & Wales	EU Directive 2002/91/EC	