



25 Raleigh Terrace, DN4 9JW

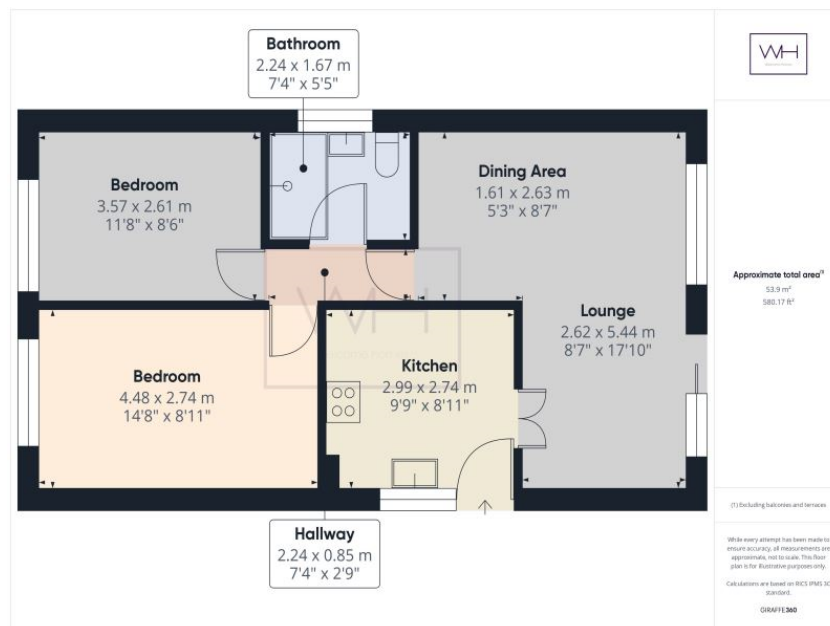
£179,950 Offers In Region Of
Tenure Freehold

- Off Road Parking
- South Facing Garden
- Garage
- Situated in a quiet cul-de-sac
- Vacant Possession
- Wet Room
- Central Location
- Two minute drive to the A1 Motorway
- Detached Bungalow

This spacious detached bungalow is offered to the market with no onward chain and vacant possession, enjoying a larger than average plot there is plenty of off road parking with the property as well as an ample rear garden and a separate garage. Although in need of cosmetic renovation the property already has a wet room installed and there are two large double bedrooms.

The living accommodation allows for a large lounge with dining area and boasts an abundance of natural light through the window and patio doors into this space. The kitchen is fitted with high quality wooden wall and base units and has an integrated oven and hob. The rear garden is low maintenance enough to be manageable whilst also offering a lawn and opportunity for landscaping.

The locality is convenient and quiet with easy access to amenities and transport networks. Call Welcome Homes to arrange a viewing



Environmental Impact (CO ₂) Rating	
	Potential
Very environmentally friendly - lower CO ₂ emissions	
(92- A	
(81-91) B	
(69-80) C	
(55-68) D	
(39-54) E	
(21-38) F	
(1-20) G	
Not environmentally friendly - higher CO ₂ emissions	
England & Wales	EU Directive 2002/91/EC

Energy Efficiency Rating	
	Potential
Very energy efficient - lower running costs	
(92- A	
(81-91) B	87
(69-80) C	69
(55-68) D	
(39-54) E	
(21-38) F	
(1-20) G	
Not energy efficient - higher running costs	
England & Wales	EU Directive 2002/91/EC